

EDENHOPE FLORA RESERVE

Edenhope Flora Reserve is a 6 - hectare reserve situated on Moss Street. This reserve offers visitors a chance to experience a pocket of remnant bushland which is home to numerous rare bird and plant species including the endangered Red-tailed Black-Cockatoo.

The sub-species South Eastern Red-tailed Black-Cockatoo (*Calyptorhynchus banksii graptogyne*) is found only found in South-West Victoria and South-East South Australia. These magnificent birds feed on the seeds of Brown Stringybarks and nest in old River Red Gums.

The Flora Reserve features a 1.5km loop walk (25 minute). The natural path is narrow and uneven in places. The trail is reasonably flat with some low incline areas. This trail is not suitable for people who require walking frames or wheelchair users.

Complemented by a small picnic and BBQ area for visitors to enjoy.

Parking available, but on natural landscape



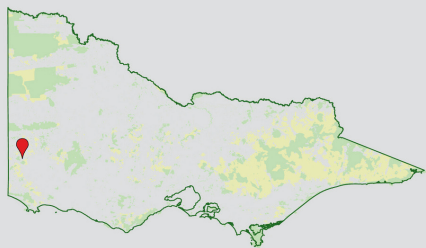
SE Red Tail Black Cockatoo
(C) Ron Ricketts



MOSAIC TRAIL

The Edenhope Flora Reserve Mosaic Trail is an artistic initiative featuring a collection of 42 tiles, each adorned with depictions of flora and fauna. These designs are inspired by the diverse species found within the Reserve. Created by talented local artists, the joint project with Newlands Reserve celebrates the natural beauty and biodiversity of the area. It was made possible through the generous support of the Victorian Government's Volunteer Innovation Fund.

EDENHOPE FLORA RESERVE



LEGEND

- Walking Track
- Mosaic Art
- Parking
- Rest Area
- Picnic Area
- Edenhope Flora Reserve

Meters
0 10 20 30 40

Edenhope Golf Club ↑

Edenhope via Moss Street →



1. Kookaburra - Nyima & Brianna
2. Lesser Wanderer - Jade & Madeline
3. Red-tailed Black Cockatoo Feathers - Gloria Freeman
4. Animal Prints - Gloria Freeman
5. Sulphur Crested Cockatoo Feathers - Adele & Taewyn
6. European Honey Bee - Judy Munn
7. Red-tailed Black Cockatoo - Jessica Sambell
8. Little Lorikeet - Teneshia & Lily
9. Australian Magpie - Taewyn & Brianna
10. Common Grass Blue - Maxine Domaschenz
11. Southern Brown Tree Frog - Jessica Sambell
12. Sulphur Crested Cockatoo - Toni Domaschenz

13. Shrub Violet - Jessica Sambell
14. Emu Bush Hibberta & Fungi - Maxine Domaschenz
15. Bull Ant - Judy Munn
16. Galah - Sharon Merrett
17. Barn Owl - Gloria Freeman
18. Common Brush-tailed Possum - Toni Domaschenz
19. Eastern Spinebill - Dierdre Jackson
20. Kreffts Glider - Sharon Merrett
21. Black Anther FLax Lily - Gloria Freeman
22. Christmas Beetle - Toni Domaschenz
23. Fat-tailed Dunnart - Jessica Sambell
24. Lesser Grass Blue - Taewyn

25. Emus - Sharon Merrett
26. Blue-spotted Hawker - Toni Domaschenz
27. Rainbow Lorikeet - Jan Obst
28. Blue Banded Bee - Jessical Sambell
29. Orchids - Jessica Sambell
30. Birds & Wattle - Elaine Hocking
31. Eastern Grey Kangaroo - Dierdre Jackson
32. Shingleback - Gloria Freeman
33. Short-beaked Echidna - Gloria Freeman
34. Christmas Jewel Spider - Airlie & Maggie
35. Lesser Long-eared Bat - Indi & Oliver
36. Yellow-footed Antechinus - Jessica Sambell

37. Yellow-tailed Black Cockatoo - Toni Domaschenz
38. Blue Wren - Judy Munn
39. Brown Snake - Freddie & Sarah Hateley
40. European Red Fox - Toni Domaschenz
41. Red-spotted Jezebel - Winnie & Harriet
42. Praying Mantis - Judy Munn